

DARULAMAN

*Lake*

homes

**DARULAMAN LAKE HOMES PHASE 3B  
DOUBLE STOREY BUNGALOW – 13 UNITS**

**CARISSA**

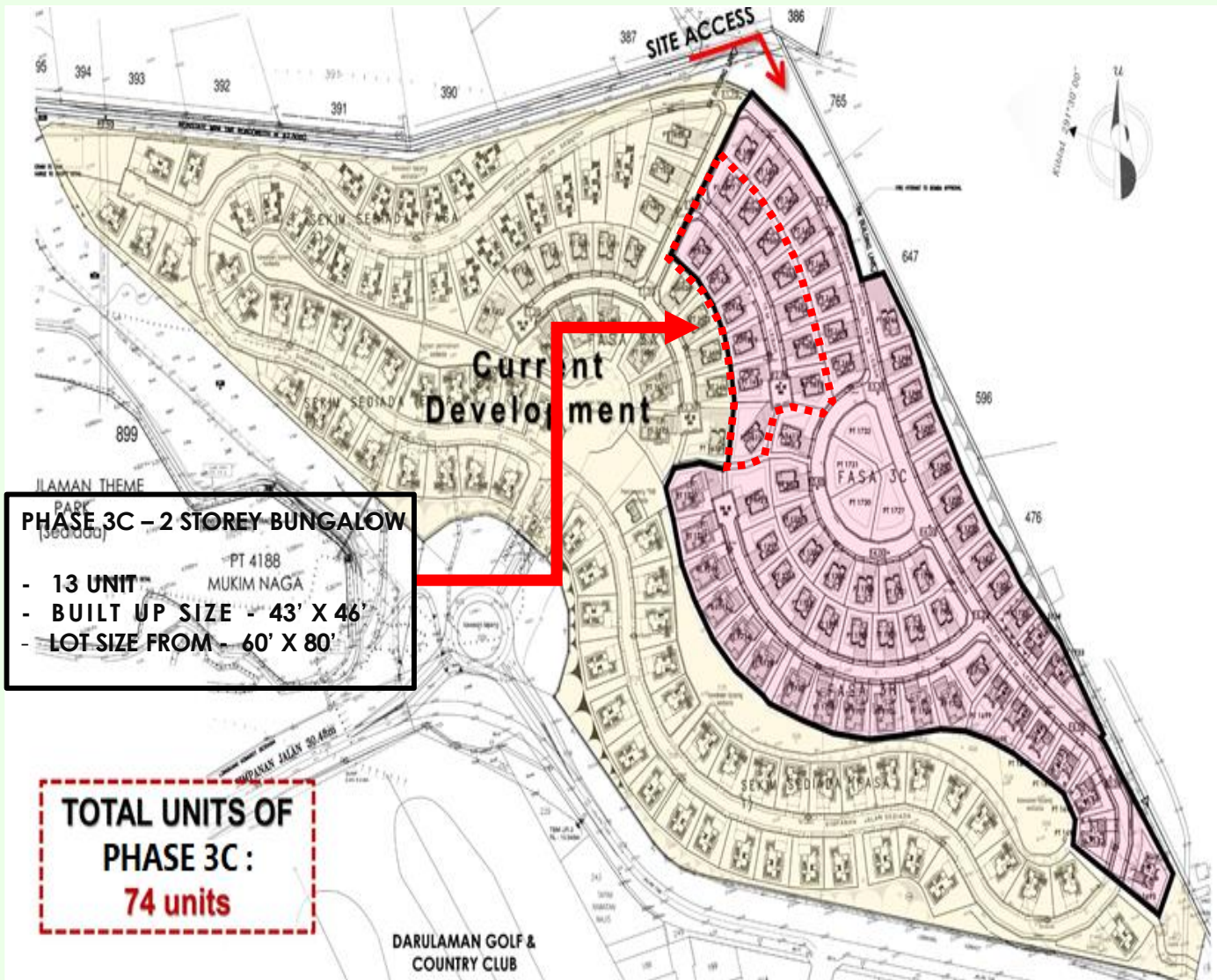


**DARULAMAN LAKE HOMES PHASE 3B, DOUBLE STOREY BUNGALOW – 13 UNITS – CARISSA – SITE PLAN**





# DARULAMAN LAKE HOMES PHASE 3B, DOUBLE STOREY BUNGALOW – 13 UNITS – CARISSA – SITE PLAN





**DARULAMAN LAKE HOMES PHASE 3B, DOUBLE STOREY BUNGALOW – 13 UNITS – CARISSA – PERSPECTIVE DRAWING**





DARULAMAN LAKE HOMES PHASE 3B, DOUBLE STOREY BUNGALOW – 13 UNITS – CARISSA – PERSPECTIVE DRAWING





DARULAMAN LAKE HOMES PHASE 3B, DOUBLE STOREY BUNGALOW – 13 UNITS – CARISSA – PERSPECTIVE DRAWING



**DARULAMAN LAKE HOMES PHASE 3B, DOUBLE STOREY BUNGALOW – 13 UNITS – CARISSA – FLOOR PLAN AREA**



**GROUND FLOOR**

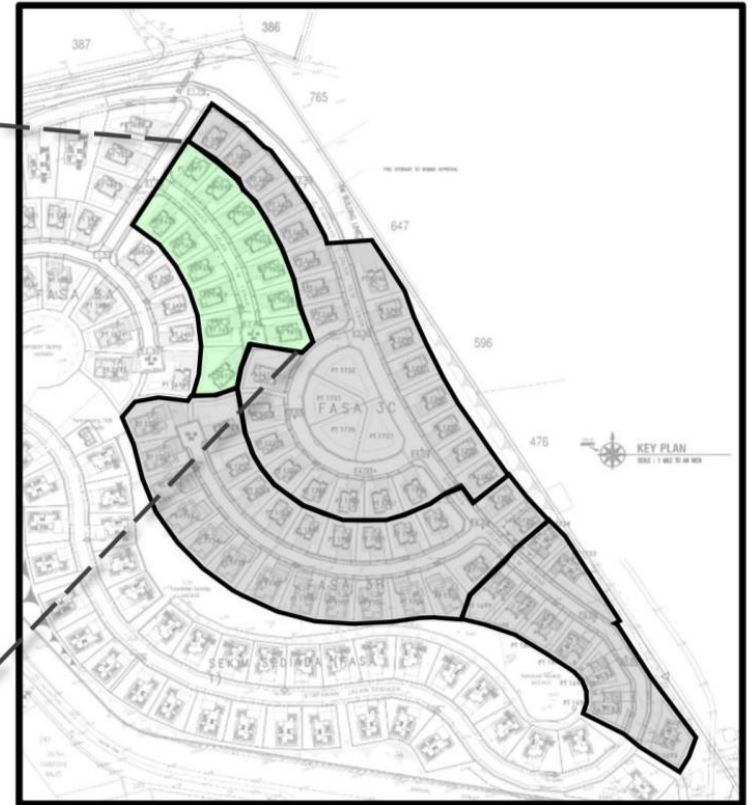
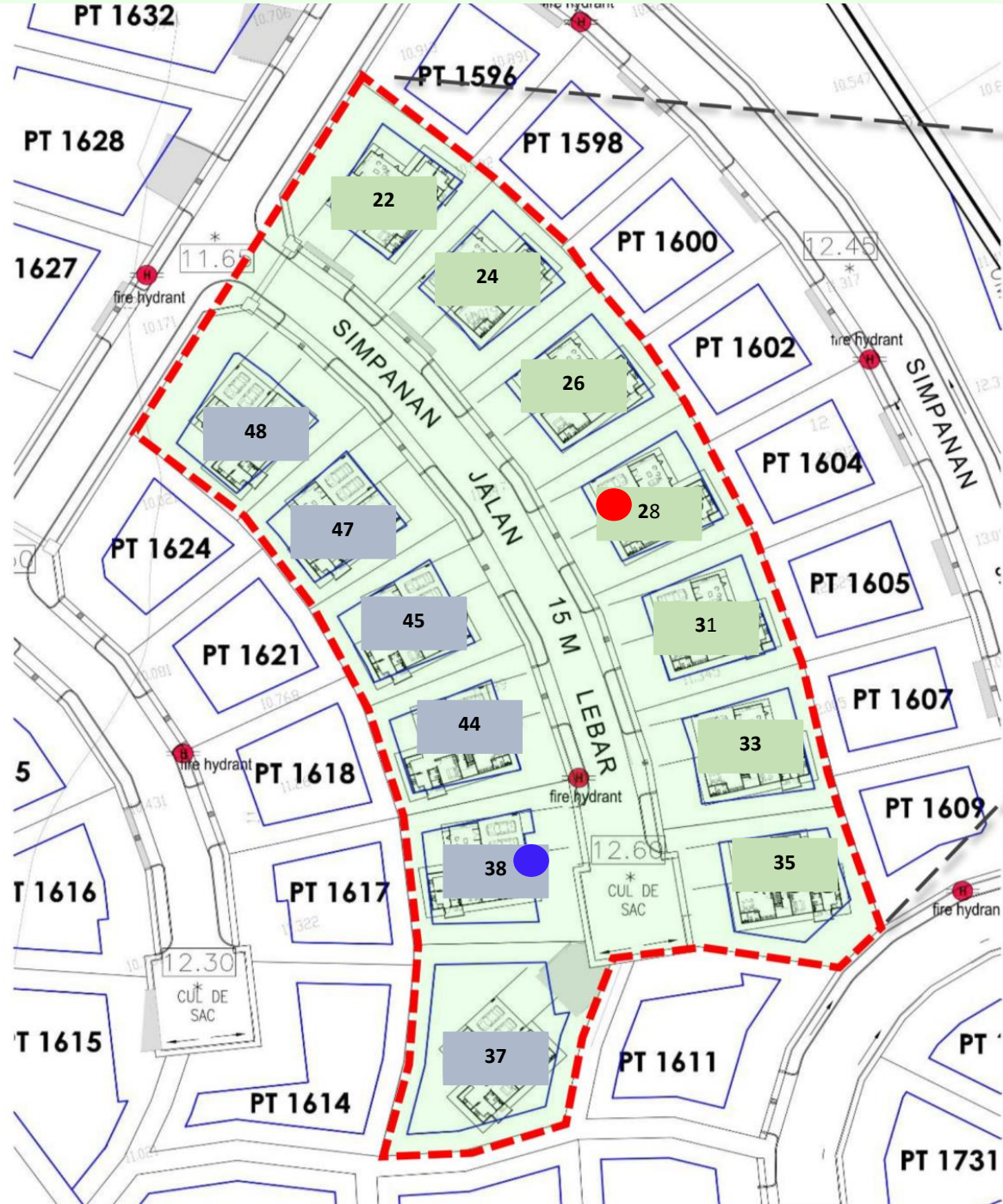


Standard Lot size: 60' x 80'

Building Size: 43' x 46'



# DARULAMAN LAKE HOMES PHASE 3B, DOUBLE STOREY BUNGALOW – 13 UNITS – CARISSA – SITE PLAN



**PHASE 3C – 2 STOREY BUNGALOW**

- 13 UNIT
- BUILT UP SIZE - 43' X 46'
- LOT SIZE FROM - 60' X 80'

Bumi  
 International

**PHASE 4A: 2022**  
- 13 Units